



GMT MONTHLY MEMBERSHIP PROGRESS REPORT

Results as of: 9/30/2019

Multiple District 26

LOCATION: MISSOURI

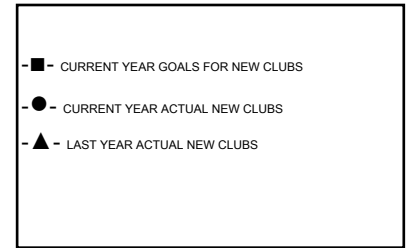
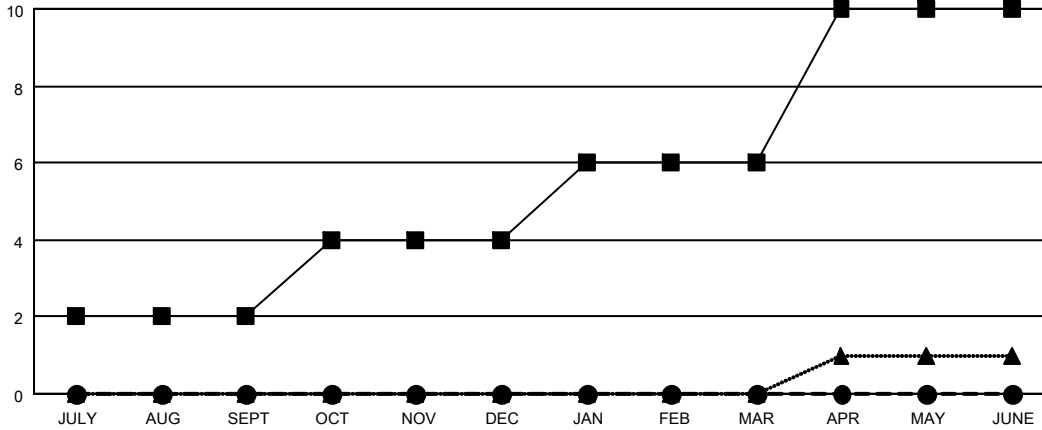
GMT: OPEN

GMT CA 1

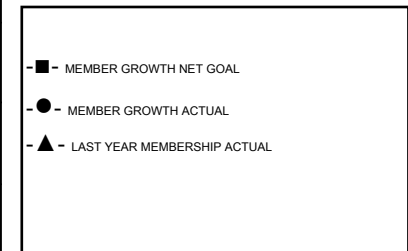
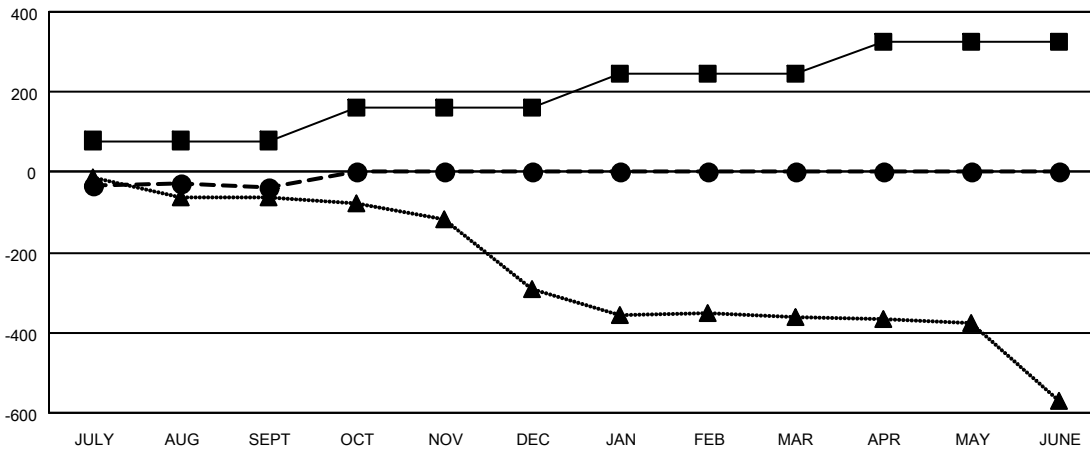
Clubs			
RESULTS FOR 2019-2020			
QUARTER	NEW CLUB GOAL	NEW CLUBS	DROPPED CLUBS
JULY/AUG/SEPT	2	0	1
OCT/NOV/DEC	2	0	0
JAN/FEB/MAR	2	0	0
APR/MAY/JUNE	4	0	0

Members			
RESULTS FOR 2019-2020			
QUARTER	MEMBER GROWTH NET GOAL	MEMBER GROWTH ACTUAL	DROPPED MEMBERS ACTUAL (including transfers)
JULY/AUG/SEPT	79	193	210
OCT/NOV/DEC	80	0	0
JAN/FEB/MAR	87	0	0
APR/MAY/JUNE	81	0	0

GOALS AND ACTUAL NEW CLUBS CUMULATIVE



GOALS AND ACTUAL MEMBERS CUMULATIVE



DROPPED CLUBS: 1	76 CLUBS OF 320 ADDED 1 OR MORE NEW MEMBERS	<u>GENDER DISTRIBUTION</u>
		MALE 6,060 (72.72%)
		FEMALE 2,273 (27.28%)
<u>DROPPED MEMBERS</u>	CLICK HERE FOR CUMULATIVE MEMBERSHIP DATA	TOTAL FAMILY UNIT MEMBERS 1,416
DECEASED 23		FAMILY MEMBERS PAYING HALF DUES 727
CLUB CANCELLED 0		
OTHER 187		
TOTAL 210		